



**HARLEQUIN**  
[www.harlequinfloors.com](http://www.harlequinfloors.com)

---

A guide to

# Event & Production Floors



# Step inside a world of performance

The world performs on Harlequin floors

Björk's Cornucopia  
Harlequin Hi-Shine | Harlequin Bespoke Printed  
© Santiago Felipe courtesy of The Shed



Mercedes-Benz



# Established in England in 1977, Harlequin is the world leader in advanced technology floors for performing arts, theatres, events and productions.

Harlequin's experience and reputation are founded on the design, manufacture and supply of a range of high quality portable and permanent sprung and vinyl floors, preferred by performers at the world's leading venues.

Harlequin's event and display floors are the industry choice for TV and film production, concerts and tours,

product launches, fashion shows, window displays and exhibitions.

Forty-five years after its creation, Harlequin is the global leader in its field with operations across Europe (London, Luxembourg, Berlin, Paris and Madrid), Asia Pacific (Hong Kong, Japan and Sydney) and the Americas (Philadelphia, Los Angeles and Fort Worth).



CIRQUE DU SOLEIL



PANDORA™



# Sustainability

Harlequin is committed to sustainable development and our corporate responsibility in this area forms a fundamental part of our business strategy. We believe that sustainability is a team effort across the entire company, driven and supported by our board of Directors.

We continually monitor the environmental impact of our manufacturing processes and operations and ensure that every department works together to plan, measure and improve our social and environmental performance.

This plan is continually being reviewed to meet our ongoing commitment to improve our overall sustainability and to reduce carbon emissions, helping us to reach Net Zero emissions.

## Harlequin Wood Flooring

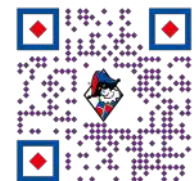
- All timber used by Harlequin is responsibly sourced from sustainable well-managed forests that are either FSC or PEFC certified.
- Harlequin has demonstrated their commitment to sustainability by gaining FSC 'Chain of Custody' Certification.
- Harlequin is the only performance floor manufacturer to use sustainable bio-based lignin glue, giving significant reduction in carbon footprint and VOC emissions.
- All Harlequin wood flooring is 100% recyclable and can be converted into sustainable biomass to generate energy.
- Harlequin Activity flooring has exceptionally high thermal and sound insulation properties helping to reduce noise transmission and energy use.
- All Harlequin timber waste and installation offcuts are sent for recycling for conversion into sustainable biomass to generate energy.



# Harlequin Vinyl Flooring

- Harlequin is committed to reuse and recycle all Harlequin products wherever possible.
- Harlequin runs a proactive 'Take Back' scheme under which post installation and post use products are recycled into second life products. All Harlequin vinyl flooring is 100% recyclable. Any Harlequin vinyl floor can be returned to our UK warehouse (or collected for a fee) for recycling.
- Since Harlequin introduced the 'committed to recycling' scheme, diverting material away from landfill, the programme has saved 282 tonnes of CO<sup>2</sup> emissions.
- All Harlequin vinyl flooring contains between 23-30% post manufacture recycled content.
- Harlequin vinyl floors are extremely durable and designed for repeated use. Some prestigious dance companies have been using Harlequin Cascade vinyl floors for over 20 years. Harlequin Hi-Shine is the preferred choice of touring bands, who use it night after night on the road. Harlequin Fiesta is designed to be used without glue, making reuse and recycling much easier. Harlequin Reversible is effectively 'two floors in one', if one side becomes worn, it can simply be turned over, thereby doubling the lifespan of the floor.
- Harlequin's own range of specialist cleaning products helps to protect Harlequin vinyl floors, extending the longevity of the product.
- Unlike other manufactures, Harlequin offer vinyl floors in a wide range of roll lengths enabling our customers to buy the amount of flooring that they actually need, therefore reducing waste.
- All Harlequin vinyl flooring products have been tested for VOCs, achieving Intertek's Clean Air Gold Certification for emissions and complying with both BREEAM (Building Research Establishment Environmental Assessment Method) and LEED (Leadership in Energy & Environmental Design) requirements for good indoor air quality.
- Harlequin uses only solvent free adhesives and print inks.
- Harlequin vinyl flooring is manufactured from 56% renewable ingredients.
- All raw materials used in the manufacture of Harlequin vinyl flooring are REACH (Registration, Evaluation, Authorisation and Restriction of Chemicals) compliant and do not contain any SVHC (Substances of Very High Concern) in concentrations greater than 0.1% (w/w).
- All Harlequin vinyl flooring products contain no CMR (Carcinogenic, Mutagenic, Reprotoxic) Category 1 or 2 substances.
- All Harlequin vinyl flooring products are free from formaldehyde and are classified as conforming to Class E1.
- Harlequin conforms to the recommendations of Vinyl Plus, the European PVC industry's commitment to sustainable development.

BREEAM®





Shawn Mendes | Harlequin Hi-Shine in Black  
© Sarah Womack

## Who We Work With

Harlequin manufactures, supplies and installs the world's best performance floors and stages in international opera houses and theatres, dance companies, performing art schools, global events, TV and film productions, cruise ships and leisure venues.

Harlequin is the flooring choice of leading stage production companies including Brilliant Stages, Stufish and Scott Fleary Productions Ltd to create the perfect stage for multiple A-list celebrity tours, concerts and performances.

THE NEXT  
STAGE

STUFISH  
ENTERTAINMENT ARCHITECTS

sf scottfleary  
the creative construction company

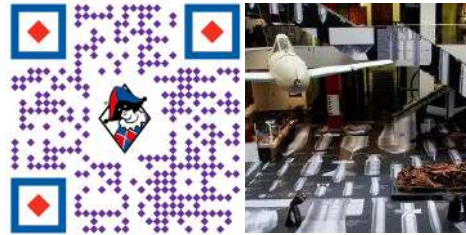
Litestructures

TAIT

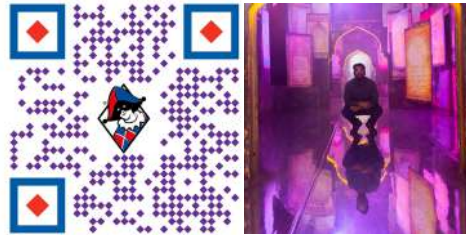
TAG Live



Imperial War Museum



Soul City Arts



Pandora



PRODUCTION PARK



Hugh Jackman | Harlequin Hi-Shine in Black  
© Sarah Womack

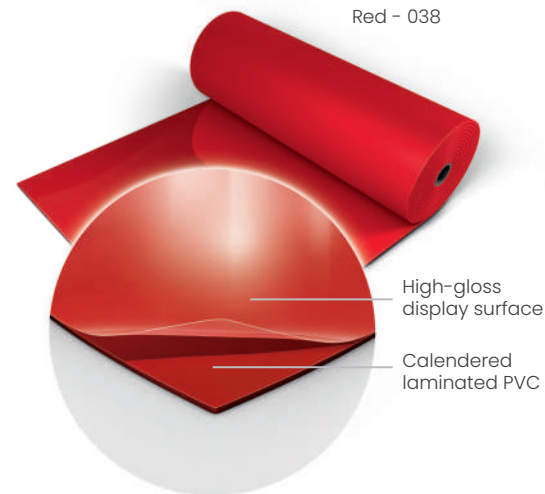


## Harlequin Hi-Shine

# A Brilliant Choice

Harlequin Hi-Shine is widely used for TV and film production, concerts and tours, product launches, fashion shows, window displays and exhibitions. It is the floor of choice for artists including Little Mix, One Direction, Lady Gaga, Will.i.am, Michael Bublé, Take That, Hugh Jackman, Kylie and Björk and has been used on numerous TV shows including The X Factor and Britain's Got Talent.

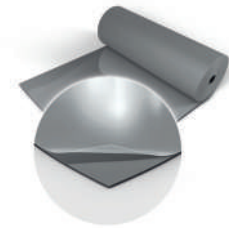
A Harlequin Hi-Shine floor is a brilliant choice for any occasion. Harlequin Hi-Shine has a unique high gloss display surface which provides a breath-taking reflective finish with excellent scratch-resistance. It is specified for portable installation and rolls out easily on any flat, firm surface.



Black - 005



Grey - 002



White - 019



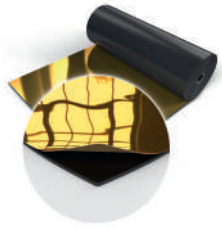
Blue - 039





## Harlequin Hi-Shine Metallic

Gold - 050



Silver - 025



The Hi-Shine metallic range, in Gold and Silver, is the latest addition to the Harlequin Hi-Shine range of floors. A worldwide hit with producers of TV shows, set designers, touring bands and fashion shows, these new high impact colours bring another dimension to the brilliant look of Harlequin Hi-Shine.

### Specification Guide

|                              |   |
|------------------------------|---|
| <b>Permanent or Portable</b> | Portable                                    |
| <b>Roll Width</b>            | 1.5m  |
| <b>Roll Lengths</b>          | 10m, 15m, 20m, 30m                          |
| <b>Colours</b>               | Black, White, Red, Blue, Grey, Gold, Silver |
| <b>Thickness</b>             | 1.5mm                                       |
| <b>Weight</b>                | 1.96kg/m <sup>2</sup>                       |
| <b>Fire Rating</b>           | Bfl-s1 (EN 13501-1)                         |



TV Production | Bespoke Printed Harlequin Cascade



Australian Ballet  
Bespoke Printed Harlequin Clarity | Harlequin Hi-Shine



Studio Wayne McGregor  
Bespoke Printed Harlequin Cascade

## Harlequin Bespoke Printed Floors

# A Fresh Look for Any Event

Have you ever thought of having a totally unique floor for your event or display? Well now you can with Harlequin's vinyl printing service.

A printed finish is available on Harlequin Cascade, Harlequin Reversible/Reversible Pro and Harlequin Clarity.

You can have a completely bespoke design or select from our image library.

- Top surface printing
- RAL colour matching available
- Eco-friendly, solvent-free UV cured inks mean very rapid drying times
- Excellent ink adhesion to the substrate gives a durable, abrasion resistant surface
- The fire rating of the Harlequin floor is unaffected
- Free samples available on request

Companies who have selected Harlequin Printed Vinyl floors: Studio Wayne McGregor, Matthew Bourne's New Adventures, the Australian Ballet, Versace Hotel, Mercury Theatre, National Theatre, the Royal Ballet and Opera and many more.

## Harlequin Clarity

Harlequin Clarity is a durable clear vinyl flooring with an embossed texture, suitable as a dance surface and for high traffic commercial use. It is specially formulated for bespoke reverse digital printing. The printed design is on the underside of the floor and so protected from wear and damage. Reverse printing is a two-stage process with the colour printed first then overlaid with a white background. Harlequin Clarity can also be used as a clear protective wear layer which allows the floor underneath to show through. Harlequin Clarity has the highest abrasion classification available and is a multi-purpose vinyl used for concerts, operatic performances and high traffic commercial purposes.



Homogeneous PVC with a slip-resistant dance surface



Jean-Michel Jarre,  
Live Tour 2016.  
Photo Courtesy  
of Louis Hallonet  
Harlequin Reversible  
Black/Grey



Burn The Floor  
Harlequin Reversible

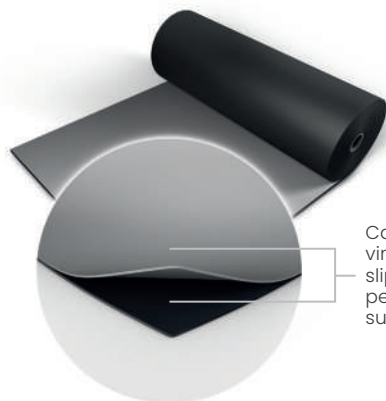
## Harlequin Reversible

# Made to Perform

Launched over four decades ago, Harlequin Reversible is the original double-sided dance and stage floor. It is a hardwearing yet lightweight calendared vinyl that is slip-resistant on both sides, so providing two floors in one.

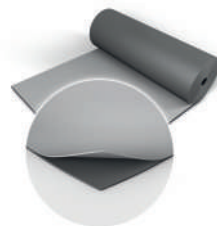
Harlequin Reversible is our most versatile portable floor and it is extremely popular among our broad range of customers across the world. It's ideally laid on any hard, smooth surface and is particularly suited to touring due to ease of handling and portability. Special wear coats on both surfaces make it easy to maintain.

Black/Grey - 004



Calendared vinyl with a slip-resistant performance surface

Dark Grey/Light Grey - 003



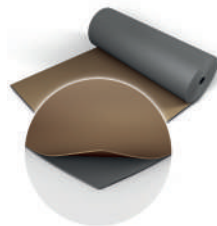
Hazelnut/Beige - 310



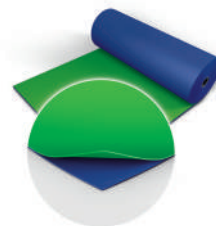
Black/White - 001



Fog/Tan - 890



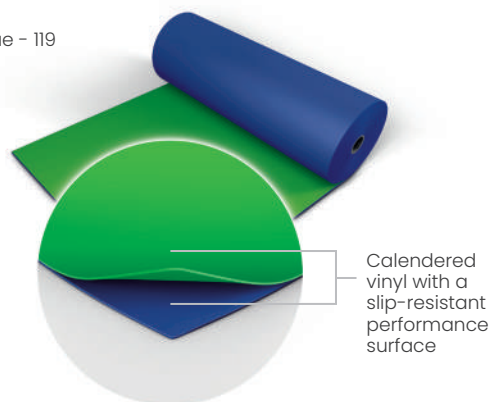
Chroma Key Green/  
Chroma Key Blue - 119



Red/Black - 302



Chroma Key Green/Chroma Key Blue - 119



## Harlequin Reversible Chroma Key Green/Chroma Key Blue

Harlequin's Chroma Key Reversible vinyl is designed specifically for digital compositing with one side Chroma Key Green and the other Chroma Key Blue. Harlequin's Chroma Key Reversible vinyl is a practical solution for filmmakers

and television producers as both a floor and backdrop. It offers an alternative method to painting and repainting studio floors each time there is a Chroma key requirement for superimposing footage using editing packages.

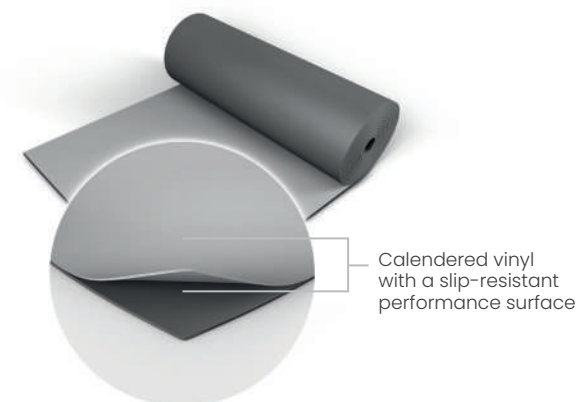
### Specification Guide

|                              |   |
|------------------------------|---|
| <b>Permanent or Portable</b> | Portable  |
| <b>Roll Width</b>            | 2m  |
| <b>Roll Lengths</b>          | 10m, 15m, 18m, 20m, 25m   |
| <b>Colours</b>               | Chroma Key Green/Blue, Black/Projection Grey, Dark grey/Light grey, Black/White, Black/Grey, Fog/Tan, Hazelnut/Beige, Red/Black |
| <b>Thickness</b>             | 1.3mm   |
| <b>Weight</b>                | 1.6kg/m <sup>2</sup>  |
| <b>Fire Rating</b>           | Bfl-s1 (EN 13501-1)   |

## Harlequin Reversible Black/Projection Grey

Harlequin's Reversible Black/Projection Grey vinyl absorbs ambient light and delivers a more vivid projection of images on to the vinyl surface. Contrast ratios are enhanced, ensuring less light bleed and less unwanted reflective light. As the leading product on the market for peak gain measurement, Harlequin's Projection Grey provides higher brightness and a wider viewing angle for audiences, through front projection. This is a practical solution for film, TV and theatre production.

Projection Grey/Black - 005



## Harlequin Reversible Pro

Harlequin Reversible Pro retains the same slip-resistant surface on both sides as our standard Reversible but, thanks to the introduction of a new mineral fibre interply layer, offers even more dimensional stability, making it an ideal surface for printing.

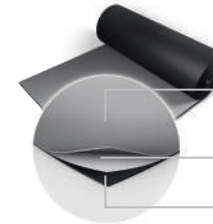
Suitable for a wide variety of uses including ballet, contemporary, percussive dance (including flamenco, Irish and tap), multi-purpose use, hip-hop, jazz, street, aerobics, Zumba, concerts, display, exhibitions, television, theatres and for operatic performances.

- Heavy duty
- Highly portable and easy to handle
- Quick to roll out and lays flat

Black/White - 001



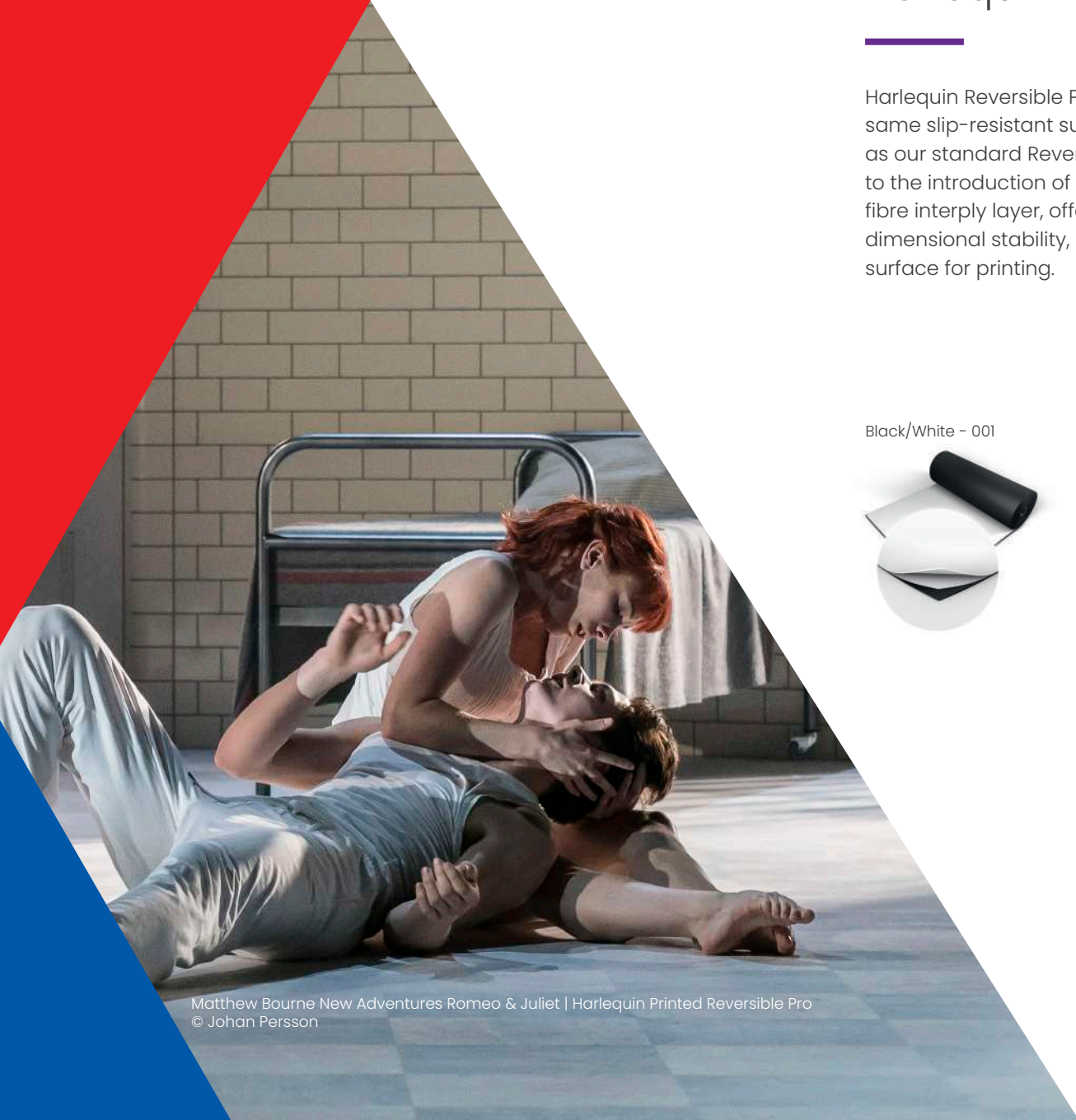
Black/Grey - 004



Calendered vinyl with a slip-resistant performance surface

Woven mineral fibre reinforcement

Calendered vinyl



Matthew Bourne New Adventures Romeo & Juliet | Harlequin Printed Reversible Pro  
© Johan Persson

### Specification Guide

|                              |   |
|------------------------------|---|
| <b>Permanent or Portable</b> | Both  |
| <b>Roll Width</b>            | 2m  |
| <b>Roll Lengths</b>          | 10m, 15m, 18m, 20m, 25m, 30m  |
| <b>Colours</b>               | Black/White, Black/Grey   |
| <b>Thickness</b>             | 1.5mm   |
| <b>Weight</b>                | 2.25kg/m <sup>2</sup>   |
| <b>Fire Rating</b>           | Bfl-s1 (BS EN ISO9239-1:2010)<br>Compliant (BS EN ISO 11925-2:2010)<br>Class 1 (ASTM E648-10) |

## Harlequin Showfloor

# Showtime in No Time

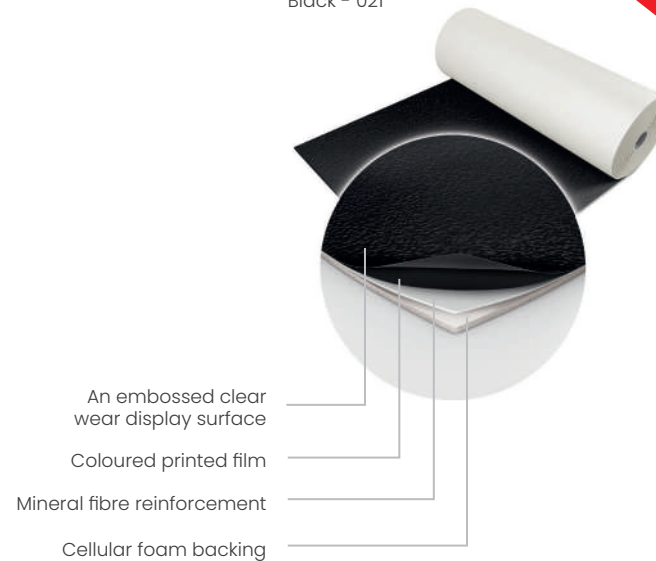
Harlequin Showfloor is perfect for use as a temporary floor for light to medium traffic environments. It has an embossed display surface that helps to prevent scuff marks and its cellular foam backing ensures comfort under foot, helps disguise uneven substrates and provides good impact sound insulation.

Harlequin Showfloor is lightweight, can be laid quickly and stays flat. It can be used over any hard, smooth surface and comes in a range of colours. It is the leading choice for fashion catwalks, exhibition stands, stage sets, events, shows and art displays.

### Specification Guide

|                              |                         |
|------------------------------|-------------------------|
| <b>Permanent or Portable</b> | Portable                |
| <b>Roll Width</b>            | 2m                      |
| <b>Roll Lengths</b>          | 10m, 15m, 20m, 25m, 30m |
| <b>Colours</b>               | Black, White, Red, Grey |
| <b>Thickness</b>             | 2.6mm                   |
| <b>Weight</b>                | 1.7kg/m <sup>2</sup>    |
| <b>Fire Rating</b>           | Bfl-s1 (EN 13501-1)     |

Black - 021



Grey - 034



White - 019



Red - 041



## Harlequin Event Floor Hire

# Spring into Action

A sprung floor flexes under impact giving a softer feel and helps to protect the dancer from injury. Performers need a sprung floor to absorb the shock of repeated impact to their joints and reduce injury from falls.

With the temporary nature of events, purchasing a sprung floor is not always necessary and budgets don't always allow for it.

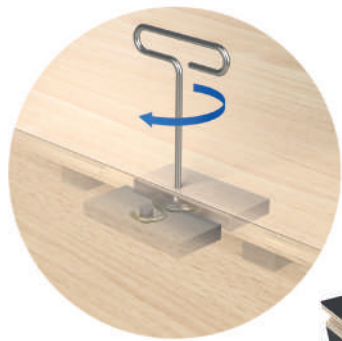
To meet your needs, Harlequin provides a hire service of its Liberty sprung floor panels so that you can install a floor specifically for your event and then return it once it's finished.

Available for both short-term and long-term hire from a single day to several months.

### Specification Guide

|  |  |
|--|--|
| <b>Permanent or Portable</b>           | Both                                     |
| <b>Floor Panel Sizes</b>               | 1m x 1m & 2m x 1m                        |
| <b>Minimum Floor Thickness</b>         | 37mm (before inclusion of chosen finish) |
| <b>Weight</b>                          | 12.5kg/m <sup>2</sup>                    |
| <b>Testing Standard</b>                | EN 14904-2006                            |
| <b>Average Shock Absorption</b>        | 67%                                      |
| <b>Maximum Point Load (BS EN 1195)</b> | 1126kg                                   |
| <b>Area Deflection</b>                 | 12.8%                                    |
| <b>Rolling Load</b>                    | >1500N                                   |
| <b>Vertical Deformation</b>            | 4.1mm                                    |





Selected Harlequin vinyl performance floor

Clear layered birch plywood with rounded tongue and groove, plus a latch and lock system

Dual density shock damping elastomer blocks at predetermined intervals

A 220g black polymer resin on both sides of the plywood. The wear side has a textured, high grip pattern; the reverse side is smooth

Dual density shock damping elastomer pads at predetermined intervals. For portable panels, pads will have clear PVC protection

Birch plywood with a rounded tongue and groove plus a latch and lock system

## Harlequin Liberty

Harlequin Liberty is a modular sprung dance floor panel system, designed for permanent or portable installation. Panels are laid in a brickwork fashion onto the sub-floor, so that cross joints do not coincide. The panels lock securely together using our unique 'one turn of the key' latch and lock mechanism.

Harlequin Liberty can be used wherever a permanent or temporary performance surface is required and is in high demand for touring productions and film shoots.

Our hire service can include

- Delivery
- Installation
- Removal
- Collection

## Harlequin Liberty HD

Harlequin Liberty HD is a further development of our renowned Liberty panel system, designed with enhanced durability in mind, for more challenging environments. The panels are overlaid with a black polymer resin. The top surface has a textured high grip pattern and is wear resistant, anti-slip and weatherproof.

Harlequin Liberty HD is suitable for exterior use in covered areas and is widely used for festivals, theme parks and similar applications.

To speak to our highly experienced Sales team about your floor hire needs call **+44 (0) 1892 514 888**

# Some Recent Harlequin Projects

Kylie | Harlequin Hi-Shine in Black  
© Nick Shepherdson

Beyonce, Take That,  
Shawn Mendes,  
Kylie, Hugh  
Jackman,  
Christina Aguilera

These major artists toured globally on Harlequin performance vinyl stage sets.

**Client** - Stufish | Brilliant Stages



## Barbican Centre AI Exhibition

A specially commissioned gloss black Harlequin Hi-Shine vinyl performance floor was selected for its reflective qualities.

**Client** - Barbican | teamLab

## British Fashion Awards | MTV European Music Awards | BRIT Awards

Harlequin Hi-Shine vinyl performance flooring is seen at the highest profile industry events.

**Client** - MTV





## 42nd Street

London's West End musical production '42nd Street' rehearsed on Harlequin Liberty sprung panels topped with Harlequin Reversible vinyl.

**Client** – GL Ltd (Michael Grade and Michael Linnit Gate Ventures)

## Film and TV Production

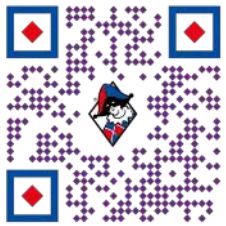
Harlequin Liberty hire floors are used on the sets of major motion pictures.

**Client** – TV and film production companies

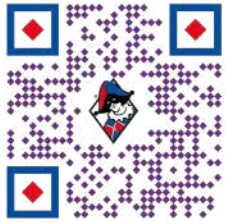


## Selfridges | Fenwicks | Aspinall | Hackett London

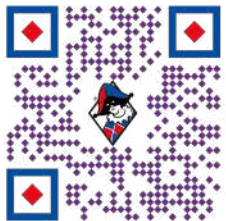
Harlequin vinyl is used to create effect in visual merchandising window display.



Contact Us



Shop



About Us



**HARLEQUIN**  
www.harlequinfloors.com

