

HARLEQUIN HI-SHINE INSTALLATION INSTRUCTIONS

Harlequin endeavours to ensure every roll of flooring is sent to you in a pristine condition, however, mistakes in orders or coloration differences may occur. Please inspect your entire order BEFORE you cut or use any flooring and refer to the Harlequin return policy.

HARLEQUIN HI-SHINE

Harlequin Hi-Shine is a performance quality sheet flooring. It is a composite of calendared laminated PVC (polyvinyl chloride) with a high-gloss PET top surface. Supplied in rolls. It is suitable for loose-lay installation. The product is comprised of PVC resins, plasticisers, pigments and PET.

RECEIPT AND STORAGE

Harlequin endeavours to ensure every roll of flooring is sent to you in pristine condition, however, mistakes in orders or coloration differences may occur. Please inspect your entire order BEFORE you cut or use any flooring and refer to the Harlequin return policy. The material should be checked for any possible faults prior to laying. Always keep the roll labels. The material should be stored for approximately 48 h at a room temperature of between 18°C – 27°C.

PREPARATION FOR INSTALLATION

Thoroughly sweep your sub floor to remove grit and dust before laying down your new Harlequin floor. An excellent precaution is to follow this by wrapping a damp cloth around the broom and 'mopping' the floor with this.

Before cutting and/or taping your floor, we always recommend that you unroll it and let it 'relax' for at least 48 hours at room temperature (approximately 18°C) to remove the stretching tension which may result from the packing of the roll at our factory.

If you need to make a preliminary cut to have enough space to 'relax' your floor, leave an extra 5cm for every 10m in the unlikely case of shrinkage. This is particularly important if you will be cutting close to walls or around obstructions such as pillars. Then, after your floor has 'relaxed', you may make your final cut.

CUTTING

If you are cutting a long roll into shorter lengths, fully unroll it first and check the full length. Harlequin will not be responsible for any issues after the roll has been cut.

Cutting our Harlequin floor is really very easy, so long as you proceed slowly and carefully and ensure the utility blade is kept sharp. Use a straight edge to cut the roll across the width of the roll. The two pieces can then easily be separated by hand. Be careful not to cut all the way through into the floor beneath. Please be aware that the cut edges can be sharp and suitable gloves should be worn.

INSTALLING THE FLOOR

Hi-Shine should always be installed by taping the underside of the joins to the floor. Hi-Shine can be butt jointed or top taped. We only recommend the use of Harlequin approved top tape to avoid damage to the surface. Please note that a quality installation will require two people.

For the installation of Harlequin Hi-Shine, we recommend the use of Harlequin double sided high tack/low tack PVC tape, or a similar high quality plasticiser resistant PVC double-sided tape. Should you choose not to use Harlequin double-sided tape, please check with the adhesive tape manufacturer to ensure that their double-sided tape is suitable for use with Harlequin Vinyl Dance Floors.

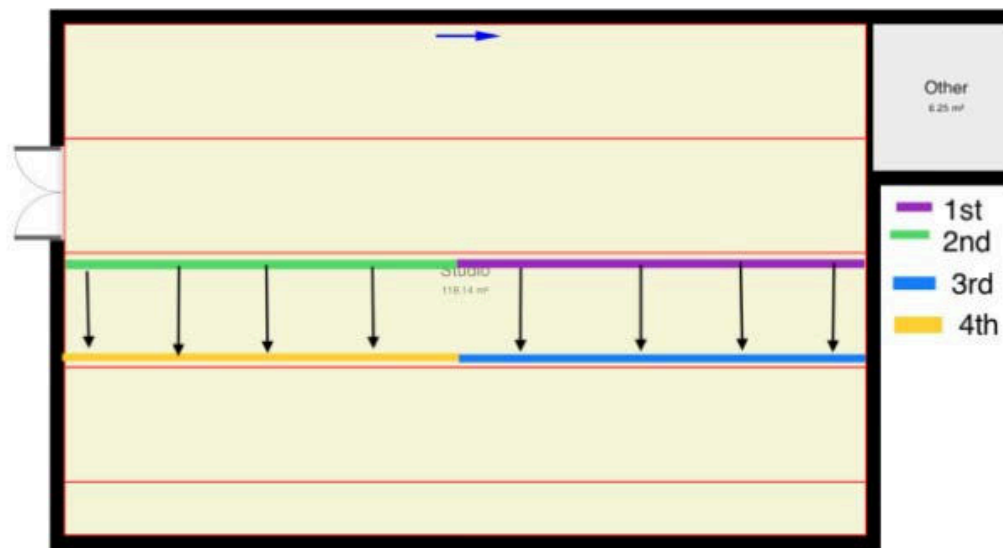
Lift back the floor at one side of the join, being sure not to let the floor move. Lay the double-sided tape using the adjacent sheet as a guide. Leave a hairline gap between runs of tape. Do not remove the top release paper from the tape yet. Do not put double-sided tape on the ends of each length of flooring.

Starting in the middle of a join, make a cut in the release paper and remove it from the tape. Smooth the flooring down onto the tape, brushing out any air bubbles with a soft broom as you go starting from the middle and working out towards the ends. Return to the middle and repeat the opposite way until one side of the flooring is held by tape.

Working away from this first line of tape, ease out any fullness in the flooring and smooth the opposite edge down onto the next line of tape, removing the release paper and brushing out any air bubbles with a soft broom as you go. Remove the release paper from the next line of tape and lay the second length of flooring onto it, so that the edges of the flooring almost touch, but leave a clean hairline gap. This will avoid the join 'tenting.' Continue in this way until all lengths of flooring have been laid.

It may be helpful with raw cement floors and some wood floors to use a suitable primer on the strip where the double-sided tape will be placed. This will make the tape adhere better. Consideration should be given depending on the type of subfloor being used. Harlequin double-sided floor tape is NEC approved.

Application of Harlequin Double-Sided Tape



If you have any questions regarding the installation or maintenance of your Harlequin floor, please contact our customer service team on +44 (0) 1892 514

+44 (0) 1892 514 888
www.harlequinfloors.com