

## **HARLEQUIN REVERSIBLE PRO INSTALLATION INSTRUCTIONS**

Harlequin endeavours to ensure every roll of flooring is sent to you in pristine condition, however, mistakes in orders or coloration differences may occur. Please inspect your entire order BEFORE you cut or use any flooring and refer to the Harlequin return policy.

### **HARLEQUIN REVERSIBLE PRO**

Harlequin Reversible Pro is a performance quality sheet flooring. It is a composite of calendered laminated PVC (polyvinyl chloride) and incorporates a reinforcing mineral fibre interlayer for strength and dimensional stability. Supplied in rolls, it is suitable for loose-lay installation. The product is comprised of PVC resins, plasticisers, pigments and a mineral fibre interlayer.

### **RECEIPT AND STORAGE**

Harlequin endeavours to ensure every roll of flooring is sent to you in pristine condition, however, mistakes in orders or coloration differences may occur. Please inspect your entire order BEFORE you cut or use any flooring and refer to the Harlequin return policy. The material should be checked for any possible faults prior to laying. Always keep the roll labels. The material should be stored for approximately 48 h at a room temperature of between 18°C - 27°C.

### **PREPARATION FOR INSTALLATION**

Thoroughly sweep your sub floor to remove grit and dust before laying down your new Harlequin floor. An excellent precaution is to follow this by wrapping a damp cloth around the broom and 'mopping' the floor with this. Before cutting and/or taping your floor, we always recommend that you unroll it and let it 'relax' for at least 48 hours at room temperature (approximately 18°C) to remove the stretching tension which may result from the packing of the roll at our factory. If you need to make a preliminary cut to have enough space to 'relax' your floor, leave an extra 5cm for every 10m in the unlikely case of shrinkage. This is particularly important if you will be cutting close to walls or around obstructions such pillars. Then, after your floor has 'relaxed', you may make your final cut.

### **CUTTING**

If you are cutting a long roll into shorter lengths, fully unroll it first and check the full length. Harlequin will not be responsible for any issues after the roll has been cut. Cutting your Harlequin floor is really very easy, so long as you proceed slowly and carefully. Use a straight edge to cut the roll with a sharp utility knife. The two pieces can then easily be separated by hand. Be careful not to cut all the way through into the floor beneath.

## INSTALLING THE FLOOR

Harlequin Reversible Pro can be installed by top taping the joins or onto Harlequin double sided high tack/low tack PVC tape.

**For the installation of Harlequin Reversible Pro with top tape,** Harlequin Reversible Pro can be installed by top taping the joins or onto Harlequin double sided high tack/low tack PVC tape. We recommend the use of Harlequin PVC or Harlequin Gaffer floor tape. Should you choose not to use Harlequin tape, please check with the adhesive tape manufacturer to ensure that their tape is suitable for use with Harlequin Vinyl performance floors. Taping the surface of your floor is very simple.

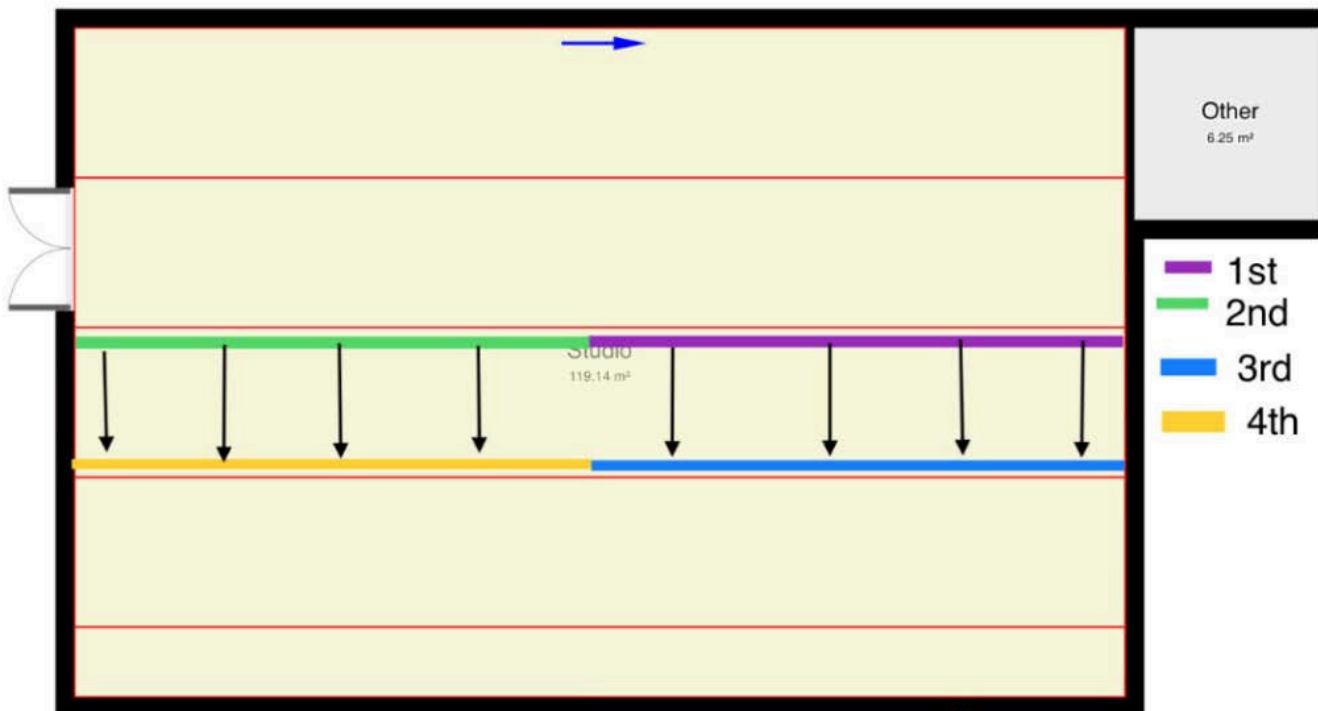
First, lay the lengths of floor side by side. It is advisable to leave a gap of about 2mm in areas of high temperature fluctuations. Unroll a few centimetres of tape onto the join, then unwind the tape in a good straight line and lay it onto the seam. Smooth the tape by pushing a soft broom along the length. It can be helpful to have someone put their foot on the end of the tape to hold it tight. Tape all the joins in this way. Finally, tape down any exposed edges of the floor, such as in doorways. If the Harlequin Reversible is laid in the middle of a larger performance area, all the edges should be taped.

**For the installation of Harlequin Reversible Pro by taping the underside,** we recommend the use of Harlequin double sided high tack/low tack PVC tape. Should you choose not to use Harlequin tape, please check with the adhesive tape manufacturer to ensure that their tape is suitable for use with Harlequin Vinyl performance floors.

Lift back the floor at one side of the join, being sure not to let the floor move. Lay the double-sided tape using the adjacent sheet as a guide. Leave a hairline gap between runs of tape. Do not remove the top release paper from the tape yet. Do not put double-sided tape on the ends of each length of flooring. Now lay the vinyl back down flat. Starting in the middle of a join, slightly lift the vinyl and make a cut in the release paper and remove it from the tape working towards one end of the area. Smooth the flooring down onto the tape, brushing out any air bubbles with a soft broom as you go starting from the middle and working out towards the ends.

Return to the middle and repeat the opposite way until one side of the flooring is held by tape. Working away from this first line of tape, ease out any fullness in the flooring and smooth the opposite edge down onto the next line of tape, removing the release paper from the middle and brushing out any air bubbles with a soft broom as you go.

Remove the release paper from the next line of tape and lay the second length of flooring onto it, so that the edges of the flooring almost touch, but leave a clean hairline gap. This will avoid the join 'tenting.' Continue in this way until all lengths of flooring have been laid. It may be helpful with raw cement floors and some wood floors to prime the strip where the double-sided tape will be placed. This will make the tape stick better. Consideration should be made depending on the type of subfloor being used. Harlequin double-sided floor tape is NEC approved.



**If you have any questions regarding the installation or maintenance of your Harlequin floor, please contact our customer services team on +44 (0)1892 514 888**