



Case Study Crescent Theatre

Overview

The Crescent is one of Birmingham's oldest theatre companies operating from a purpose-built theatre in Brindleyplace. The theatre has a membership of more than 250 actors, technicians and set designers. Designed by architects Terry Farrell and John Chatwin, it has a 340-seat main house and a 120-seat studio theatre, rehearsal rooms and a bar. Over 15 productions a year are staged in-house alongside a wide variety of productions.



Project highlights

Name:	Crescent Theatre
Location:	Sheepcote St, Birmingham
Project Type:	Stage refurbishment
Product Types:	Harlequin Stages



HARLEQUIN
www.harlequinfloors.com

Case Study

Crescent Theatre

The requirement:

A full stage refurbishment to the main stage and orchestra pit. A custom surface refit including new dip trap lids and performer trap door.

The solution:

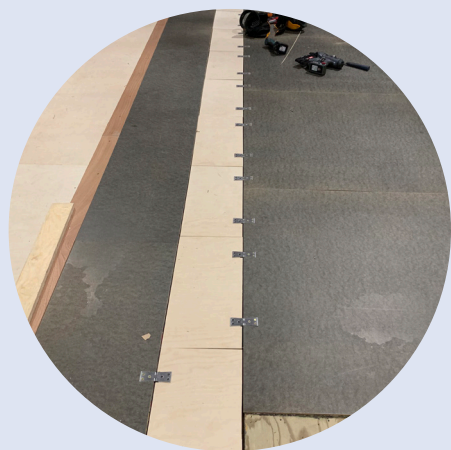
Removal of 172 m² of existing hardboard from the main stage and orchestra pit lift.

Rotated existing centre stage trap door by 90 degrees creating a brand new one with battens and plywood.

Creation of new dip trap lids down stage and on the orchestra pit lift using 21mm plywood.

Replacement of original softwood edging with hardwood edging around the orchestra pit lift.

Installed a new layer of sacrificial oil tempered hardboard and painted with black stage paint.



If you would like further information, advice and samples please contact us on +44(0) 1892 514 888 or enquiries@harlequinfloors.com



HARLEQUIN
www.harlequinfloors.com