



# Harlequin Professional Home Studio Kit Assembly Instructions

**The following instructions apply to the 2m x 2m Harlequin Professional Home Studio Kit with a Harlequin Cascade top surface.**

We recommend that two people assemble this floor. Before you start, please ensure that you have enough room to lay it and that your sub-floor (concrete, carpet, etc.) is clean. You will also need a pair of scissors to cut your Harlequin dance floor tape.

## Your kit contains:

- One 2m x 1m Harlequin Liberty® sprung floor panel
- Two 1m x 1m Harlequin Liberty® sprung floor panels
- One locking tool
- A 2m x 2m roll of Harlequin Cascade vinyl top surface
- One roll of Harlequin double-sided dance floor tape.

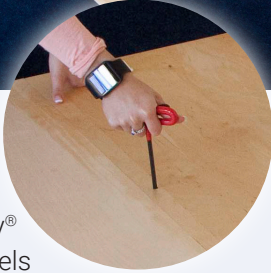


**HARLEQUIN**  
[www.harlequinfloors.com](http://www.harlequinfloors.com)

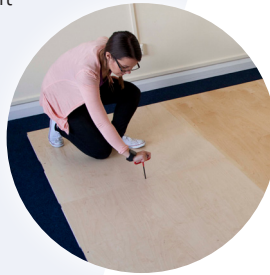
# How to assemble



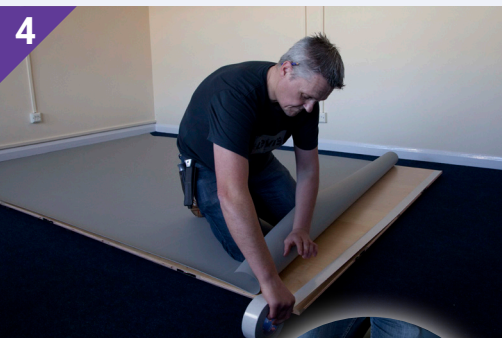
Place your 1m x 1m and 2m x 1m Harlequin Liberty® sprung floor panels onto your sub-floor. Push the smaller panel against the larger panel and join them together using the locking tool. You will need to turn the locking tool a full 360 degree revolution and will hear a noticeable 'click' once the latch and lock mechanism has joined together.



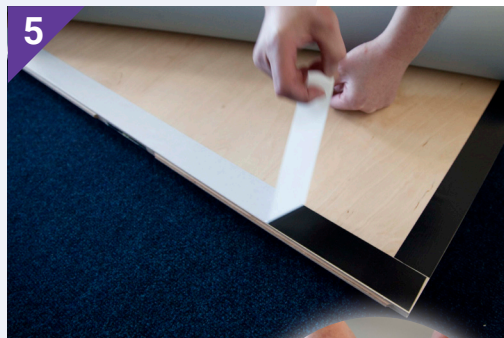
Place your other 1m x 1m Harlequin Liberty® sprung floor panel onto your sub-floor and push it into place. Join this panel to the others using the locking tool.



Roll out your 2m x 2m Harlequin Cascade vinyl top surface onto the Harlequin Liberty® sprung floor.



Around all the edges of the Harlequin Liberty® sprung floor, apply the Harlequin double-sided dance floor tape.



Gradually unpeel the Harlequin double-sided dance floor tape before sticking the Harlequin Cascade vinyl top surface down as you go around the edges.



Your Harlequin Professional Home Studio Kit is now ready for use, although we recommend that you clean it first using Harlequin vinyl dance floor cleaner.

If you would like further information, advice and samples please contact us on +44(0) 1892 514 888 or [enquiries@harlequinfloors.com](mailto:enquiries@harlequinfloors.com)



**HARLEQUIN**  
[www.harlequinfloors.com](http://www.harlequinfloors.com)