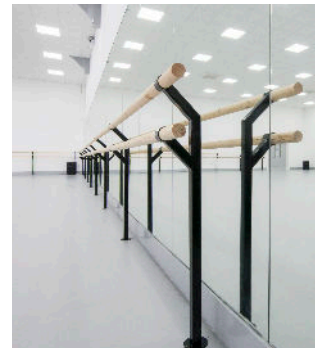
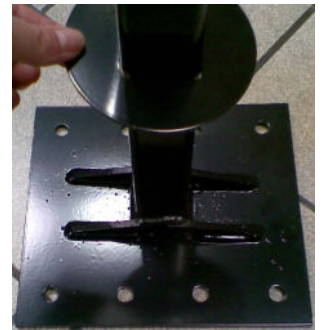


HARLEQUIN BALLET BRACKETS INSTALLATION INSTRUCTIONS

FLOOR FIXED BALLET BARRES

Floor fixings are not supplied with brackets.
For sound concrete, use expanding bolts - M10 120mm Through bolts.
For spalled concrete use a resin fixing.

1. Clean area of installation
2. Check the sub floor for any pipes and/or cables
3. Set out start lines. Measure how far you want the brackets to be from the wall and strike a chalk line. Check to ensure the wall doesn't bow out. Adjust your line if necessary.
4. Set out the spacing required between brackets and mark positions of base plates and drill holes for fixings using an SDS drill and correct size drill bit. Raise the cover plate and secure it using some low tack tape such as masking tape.
5. Vacuum out the holes to remove any dust or debris. Set the nut on the bolt a few threads down from the top, then insert the through bolts and tap gently with a hammer until the washer and nut sit flush with the base plate.
6. Tighten the nut with a torque wrench. Ensure the brackets are sitting plump and level, shim if required.
7. Trim barres to length as required and fix inside bracket heads with fixings provided.
8. Once the floor has been installed around the bracket, the cover plate can be lowered.
9. Final check that installed barres are level, tidy up and clean site.



RETRO-FITTED FLOOR BRACKETS

Retro-fit floor brackets can be installed onto solid floors.
Floor fixings are not supplied with brackets.
For wooden floors use coach screws. Length will depend on subfloor build-up.
For sound concrete use expanding bolts - M10 120mm Through bolts.
For spalled concrete use a resin fixing - size as above.

1. Clean area of installation
2. Check the subfloors for any pipes and/or cables
3. Set out start lines. Measure how far you want the brackets to be from the wall and strike a chalk line. Check to ensure the wall doesn't bow out. Adjust your line if necessary.
4. Set out the spacing requiring between brackets and mark positions of base plates and drill holes for fixings using an SDS drill and correct size drill bit. Raise the cover plate and secure it using some low tack tape such as masking tape.
5. Vacuum out the holes to remove any dust or debris. Screw the coach screw into the wooden subfloor or alternatively, set the nut on the bolt a few threads down from the top, then insert the through bolts and tap gently with a hammer until the washer and nut sit flush with the base plate.
6. Tighten the nut with a torque wrench. Ensure the brackets are sitting pump and level, shim if required. Lower the base plate to cover the fixings.
7. Trim barres to length as required and fix inside bracket heads with fixings provided.
8. Final check that installed barres are level, tidy up and clean site.



WALL FIXED BALLET BARRES

Wall fixed ballet barres can be installed on new mirror walls if the mirrors are manufactured with water-jet cut outs as shown in Fig 2.

Single square, single oval and double oval wall fixed brackets are fixed with 4 of 50mm x No 12 screws on the back plate.

Double square wall fixed brackets are fixed with 6 of 50mm x No12 screws on the back plate.

1. Clean area of installation
2. Check the wall for any pipes and/or cables. For stud walls a pattress is required. Please see Fig 1.
3. Set out start lines. Fix a min. 12mm MDF dado rail to the wall if necessary, using adhesive and fixings – this will support the actual ballet barre brackets.
4. Mark positions of brackets and drill holes for fixings.
5. Double check levels of all brackets and fix using relevant fixings.
6. Trim barres to length as required and fix inside bracket heads with fixings provided.
7. Final check that installed barres are level, tidy up and clean site.

Fig 1.

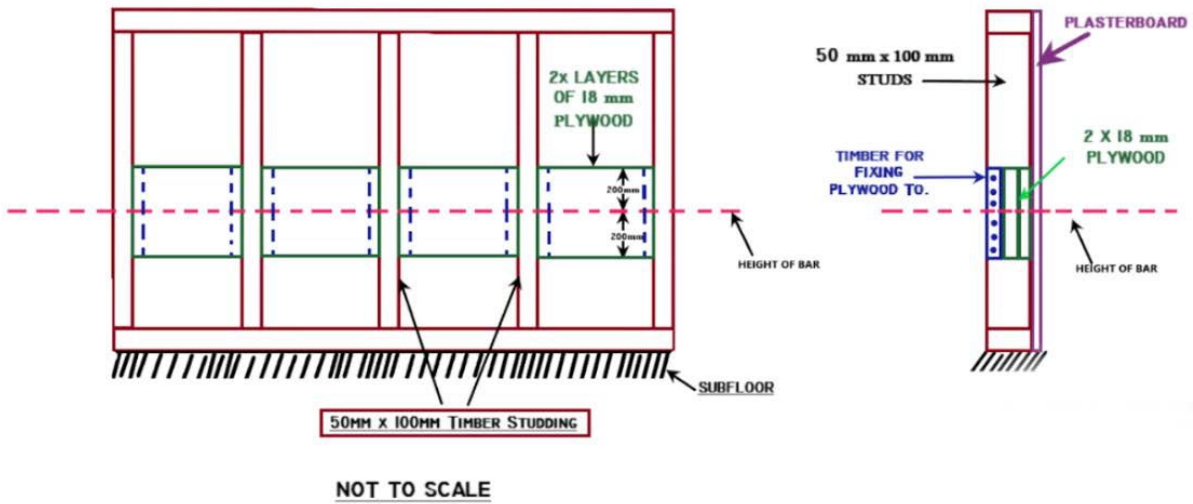


Fig 2.

